

# Okayama University Libraries



OKAYAMA  
UNIVERSITY

GLOBAL GATE FOR LEARNING





Central Library



Shikata Branch Library



Institute of Plant Science and Resources  
Branch Library (IPSR Branch Library)

Okayama University Library was established in 1949 just at the same time when the Okayama University. Next year, Library was opened.

Okayama University Libraries consist of three libraries: Central Library on Tsushima Campus, Shikata Branch Library on Shikata Campus, and Institute of Plant Science and Resources Branch Library on Kurashiki Campus. The libraries provide a wide range of services to the local communities, and educational and research institutions, not only to member at Okayama University. Some library materials are available for reading to people in the community to support their lifelong learning activities. We also hold regular exhibitions, mainly records and documents of the Ikeda clan, the fief lord of Okayama.

To promote and strengthen the web-based e-library services, we have been working on digitizing internal publications and the many Ezu (pictorial map) in the special collections. And we provide access to approximately 84,000 e-journals, 31 databases, and publishes the academic research achievements of the University's members (Scientific Achievement Repository).

#### Okayama University Libraries

**Central Library** 3-1-1 Tsushima-naka, Kita-ku, Okayama City, Okayama 700-8530

**Shikata Branch Library** 2-5-1 Shikata-cho, Kita-ku, Okayama City, Okayama 700-8558

**Institute of Plant Science and Resources Branch Library** 2-20-1 Chuo, Kurashiki City, Okayama 710-0046

## Facilities, Library Hours, and Borrowing Limits

As of May 1, 2025

	Shelf Capacity	Number of Seats	Library Hours (during school terms)			Borrowing Limit (books)	
			Weekdays	Saturday	Sunday and holidays	Undergraduate and graduate students	Faculty and staff
Central Library	(books, in tens of thousands) 113.1	(seats) 1,130	8:00-23:00	10:00-18:00		10 books, 14 days 15 books, 14 days	30 books, 14 days
Shikata Branch Library	22.0	377	9:00-21:00	10:00-17:00	Closed	5 books, 14 days	5 books, 14 days
IPSR Branch Library	15.0	36	9:00-17:00	Closed		5 books, 14 days	No limit, 14 days
Total	150.1	1,543					

Shikata Branch Library is open 24 hours a day for students and teachers at Shikata campus (no staff on duty) after closing time.

IPSR Branch Library is open 24 hours a day only for IPSR members.

## Library Holdings

AY2024-AY2021, from the top down  
(E-journals are from AY2025 to AY2022)

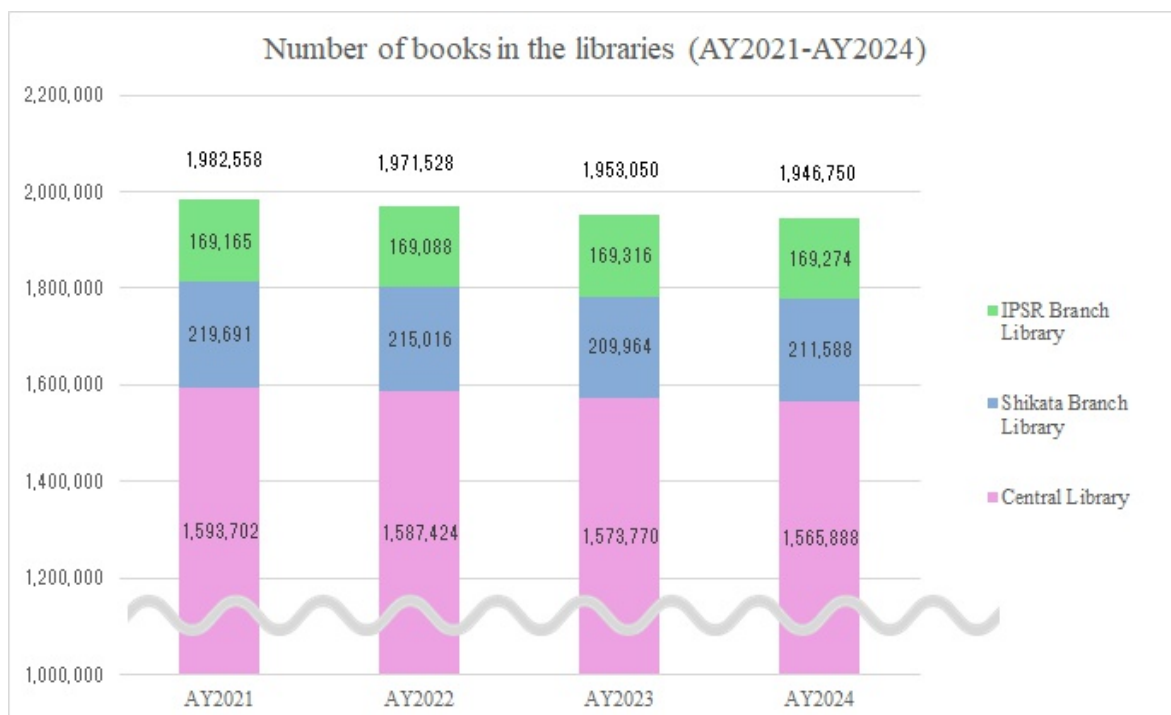
	Books			Journals (titles)			E-journals*
	Japanese and Chinese books	Foreign books	Total	Japanese and Chinese journals	Foreign journals	Total	
<b>Central Library</b>	<b>1,101,492</b>	<b>464,396</b>	<b>1,565,888</b>	<b>21,725</b>	<b>10,063</b>	<b>31,788</b>	–
	1,108,511	465,259	1,573,770	21,669	10,066	31,735	–
	1,120,473	466,951	1,587,424	21,610	10,075	31,685	–
	1,127,233	466,469	1,593,702	21,597	10,056	31,653	–
<b>Shikata Branch Library</b>	<b>115,304</b>	<b>96,284</b>	<b>211,588</b>	<b>4,092</b>	<b>3,179</b>	<b>7,271</b>	–
	113,738	96,226	209,964	4,088	3,177	7,265	–
	113,074	101,942	215,016	4,086	3,186	7,272	–
	115,912	103,779	219,691	4,081	3,193	7,274	–
<b>IPSR Branch Library</b>	<b>77,778</b>	<b>91,496</b>	<b>169,274</b>	<b>9,179</b>	<b>4,959</b>	<b>14,138</b>	–
	77,645	91,671	169,316	9,146	4,918	14,064	–
	77,454	91,634	169,088	9,111	4,856	13,967	–
	77,496	91,669	169,165	9,076	4,762	13,838	–
<b>Total</b>	<b>1,294,574</b>	<b>652,176</b>	<b>1,946,750</b>	<b>34,996</b>	<b>18,201</b>	<b>53,197</b>	<b>84,482</b>
	1,299,894	653,156	1,953,050	34,903	18,161	53,064	88,373
	1,311,001	660,527	1,971,528	34,807	18,117	52,924	84,345
	1,320,641	661,917	1,982,558	34,754	18,011	52,765	85,938

\*The number of e-journals is the number of titles registered in Link Resolver.



## Number of Books in the Libraries

\*Including those kept in laboratories



## Service

AY2024-AY2021, from the top down

	Number of Open Days	Number of Visitors	Lending to individuals	Interlibrary Loan*		Reference service	Usage of Special Collections (No. of items)
				Requests	Request received		
Central Library	295	359,722	71,522	1,365	1,172	8,993	1,502
	308	338,559	75,925	1,045	1,255	8,464	1,562
	310	295,814	78,310	1,479	1,373	7,395	1,527
	276	198,152	59,708	1,776	1,558	4,954	1,148
Shikata Branch Library	274	84,683	9,818	694	737	3,529	57
	273	68,469	9,957	603	836	3,419	246
	280	55,539	10,865	838	988	3,400	2
	273	47,303	10,621	871	1,281	3,354	5
IPSR Branch Library	239	6,374	134	21	167	257	7
	241	6,974	143	10	425	331	124
	240	6,995	231	17	212	290	0
	204	6,644	248	4	248	65	0
Total		450,779	81,474	2,080	2,076	12,779	1,566
		414,002	86,025	1,658	2,516	12,214	1,932
		358,348	89,406	2,334	2,573	11,085	1,529
		252,099	70,577	2,651	3,087	8,373	1,153

\* The number includes Interlibrary Loan within Okayama University Libraries

## Special Collections

### The Ikeda Family Collection (Ikedake Bunko)

Central Library houses the Ikeda Family Collection (Ikedake Bunko) which contains records and documents of the Ikeda clan, the fief lord of Okayama.

The collection consists of 68,083 items of administrative and legislative archives, 22,117 volumes of Japanese classics, and 10,420 volumes of Chinese classics.

The collection is well known as the first-rate primary materials for the research of the system of shogunate government and clan governments in the Edo period in Japan.



Shinchō ki (Chronicle of Nobunaga) in 15 volumes  
〈Important Cultural Property〉  
Keichō 15 (1610)  
Call No. 貴-48 (Ki-48)



Gokōen zu (Kōrakuen Garden)  
Bunkyū 3 (1863)  
Call No. T7-123

## Programs Utilizing the Special Collections

1. Exhibition of Ezu from the Ikeda Family Collection, since 1997 (co-sponsored by Okayama City Museum since 2005)
2. Okayama Korakuen Garden Workshop for children, since 2006 (co-sponsored by the Faculty of Education)
3. Open Lectures at Okayama University, since 2008
4. Special Exhibitions on Plants and Agriculture, since 2009 (at the Institute of Plant Science and Resources Branch Library)



Okayama Korakuen Workshop for Children in AY2024



Open Lecture at Okayama University in AY2024

## Director

## Employees

AY2025-AY2022, from top down

As of May 1 each year

### Director of Okayama University Libraries

Kenji Tsuruta  
(Faculty of Environmental, Life, Natural Science  
and Technology)

Appointed in April 2025

### Deputy Director

Tatsuo Fujii  
(Faculty of Environmental, Life, Natural Science  
and Technology)

Appointed in April 2021

Masafumi Motomura  
(Faculty of Interdisciplinary Science and  
Engineering in Health Systems)

Appointed in April 2021

### Director of Shikata Branch Library

Kenji Yokota  
(Faculty of Health Sciences)

Appointed in April 2024

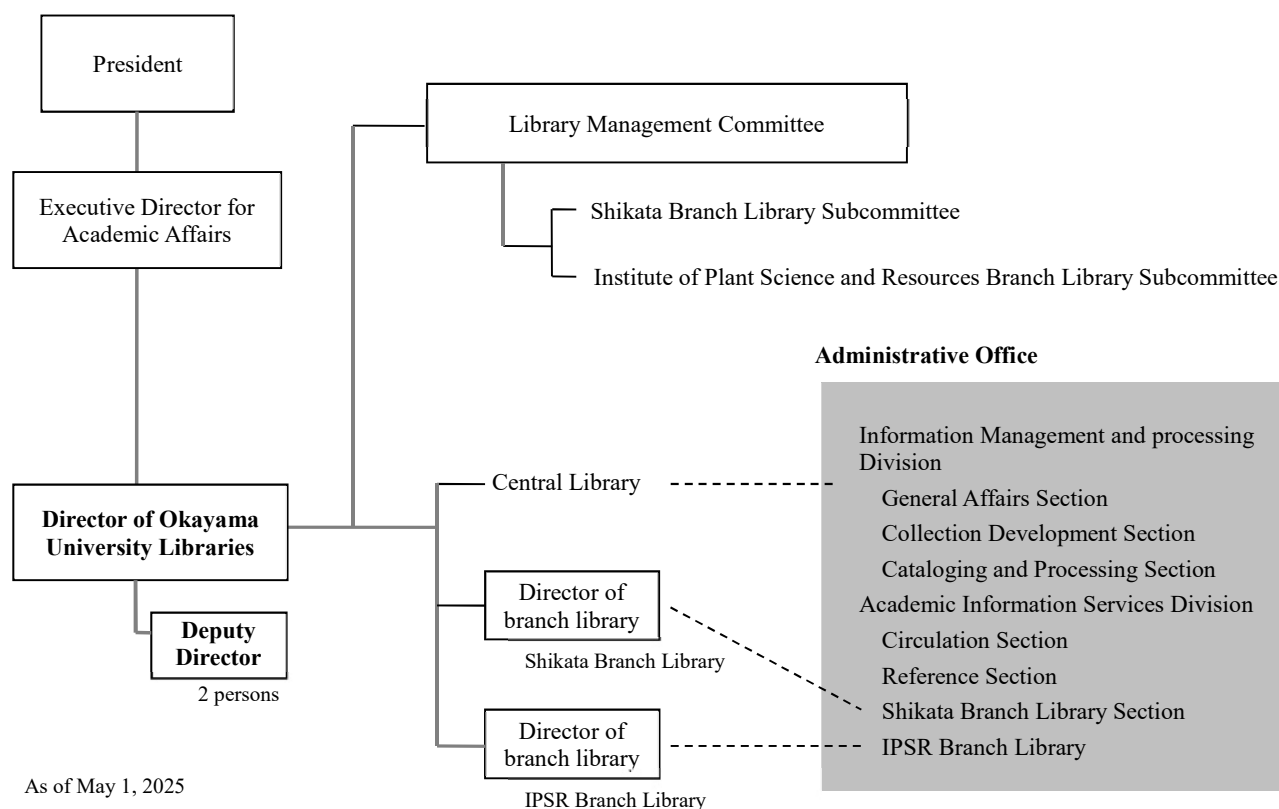
### Director of IPSR Branch Library

Maki Katsuhara  
(Institute of Plant Science and Resources)

Appointed in April 2025

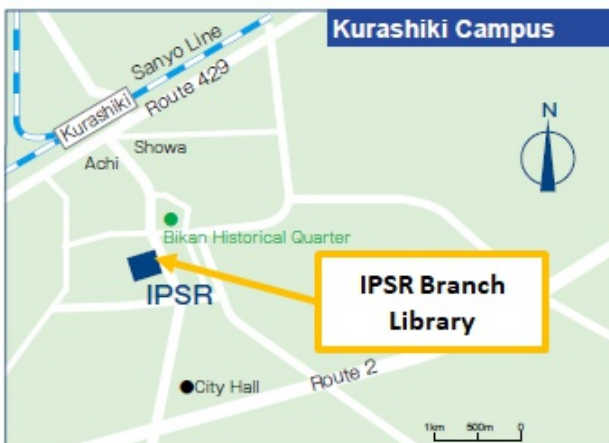
	Full-time	Part-time	Total
Central Library	20	13	33
	21	13	34
	20	13	33
	17	13	30
Shikata Branch Library	4	4	8
	4	4	8
	4	4	8
	3	4	7
IPSR Branch Library	1	2	3
	1	2	3
	1	2	3
	1	2	3
Total	25	19	44
	26	19	45
	25	19	44
	21	19	40

## Organization



## Access Map

**Tsushima Campus / Shikata Campus**  
**Higashiyama Campus / Hirai Campus**





## Okayama University Libraries

3-1-1 Tsushima-naka, Kita-ku, Okayama 700-8530

Contact for Inquiries: Okayama University Libraries

Tel. 086-251 -7304

E-mail [fae7304@adm.okayama-u.ac.jp](mailto:fae7304@adm.okayama-u.ac.jp)

Edited by:

Okayama University Libraries

[https://www.lib.okayama-u.ac.jp/index\\_e.html](https://www.lib.okayama-u.ac.jp/index_e.html)

Okayama University Libraries

Search