

Okayama University Libraries



OKAYAMA
UNIVERSITY

GLOBAL GATE FOR LEARNING





Central Library



Shikata Branch Library



Institute of Plant Science and Resources
Branch Library (IPSR Branch Library)

Okayama University Library was established in 1949 just at the same time when the Okayama University. Next year, Library was opened.

Okayama University Libraries consist of three libraries: Central Library on Tsushima Campus, Shikata Branch Library on Shikata Campus, and Institute of Plant Science and Resources Branch Library on Kurashiki Campus. The libraries provide a wide range of services to the local communities, and educational and research institutions, not only to member at Okayama University. Some library materials are available for reading to people in the community to support their lifelong learning activities. We also hold regular exhibitions, mainly records and documents of the Ikeda clan, the fief lord of Okayama.

To promote and strengthen the web-based e-library services, we have been working on digitizing internal publications and the many Ezu (pictorial map) in the special collections. And we provide access to approximately 85,000 e-journals, 31 databases, and publishes the academic research achievements of the University's members (Scientific Achievement Repository).

Okayama University Libraries

Central Library 3-1-1 Tsushima-naka, Kita-ku, Okayama City, Okayama 700-8530

Shikata Branch Library 2-5-1 Shikata-cho, Kita-ku, Okayama City, Okayama 700-8558

Institute of Plant Science and Resources Branch Library 2-20-1 Chuo, Kurashiki City, Okayama 710-0046

Facilities, Library Hours, and Borrowing Limits

As of May 1, 2023

	Shelf Capacity	Number of Seats	Library Hours (during school terms)			Borrowing Limit (books)	
			Weekdays	Saturday	Sunday and holidays	Undergraduate and graduate students	Faculty and staff
Central Library	(books, in tens of thousands) 113.0	(seats) 727	8:00-23:00	10:00-18:00		10 books, 14 days 15 books, 14 days	30 books, 14 days
Shikata Branch Library	22.0	377	9:00-21:00	10:00-17:00	Closed	5 books, 14 days	5 books, 14 days
IPSR Branch Library	15.0	36	9:00-17:00	Closed		5 books, 14 days	No limit, 14 days
Total	150.0	1,140					

Shikata Branch Library is open 24 hours a day for students and teachers at Shikata campus (no staff on duty) after closing time.

IPSR Branch Library is open 24 hours a day only for IPSR members.

Library Holdings

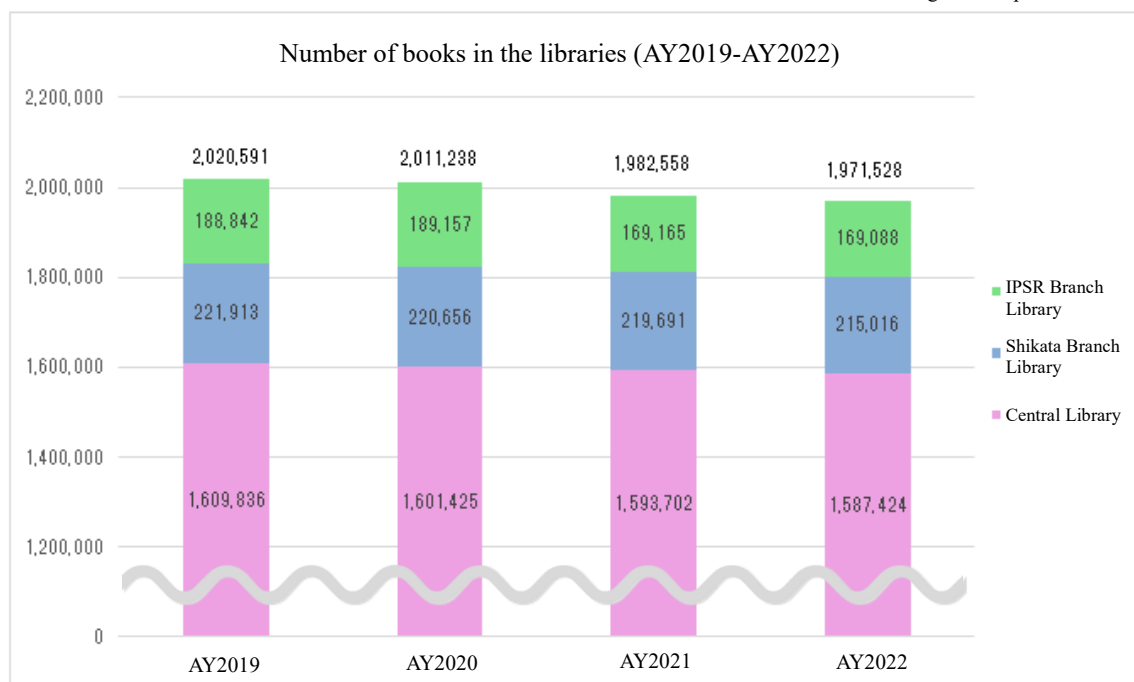
AY2022-AY2019, from the top down
(E-journals are from AY2023 to AY2020)

	Books			Journals (titles)			E-journals*
	Japanese and Chinese books	Foreign books	Total	Japanese and Chinese journals	Foreign journals	Total	
Central Library	1, 120, 473	466, 951	1, 587, 424	21, 610	10, 075	31, 685	–
	1,127,233	466,469	1,593,702	21,597	10,056	31,653	–
	1,135,453	465,972	1,601,425	21,533	10,078	31,611	–
	1,143,607	466,229	1,609,836	21,040	9,973	31,013	–
Shikata Branch Library	113, 074	101, 942	215, 016	4, 086	3, 186	7, 272	–
	115,912	103,779	219,691	4,081	3,193	7,274	–
	115,566	105,090	220,656	3,967	3,238	7,205	–
	115,904	106,009	221,913	3,760	3,134	6,894	–
IPSR Branch Library	77, 454	91, 634	169, 088	9, 111	4, 856	13, 967	–
	77,496	91,669	169,165	9,076	4,762	13,838	–
	96,564	92,593	189,157	9,054	4,712	13,766	–
	96,344	92,498	188,842	8,965	4,692	13,657	–
Total	1, 311, 001	660, 527	1, 971, 528	34, 807	18, 117	52, 924	84, 345
	1,320,641	661,917	1,982,558	34,754	18,011	52,765	85,938
	1,347,583	663,655	2,011,238	34,554	18,028	52,582	84,234
	1,355,855	664,736	2,020,591	33,765	17,799	51,564	79,813

*The number of e-journals is the number of titles registered in Link Resolver.

Number of Books in the Libraries

*Including those kept in laboratories



Service

AY2022-AY2019, from the top down

	Number of Open Days	Number of Visitors	Lending to individuals	Interlibrary Loan*		Reference service	Usage of Special Collections (No. of items)
				Requests	Request received		
Central Library	310	295,814	78,310	1,479	1,373	7,395	1,527
	276	198,152	59,708	1,776	1,558	4,954	1,148
	248	128,690	57,763	1,621	1,561	3,217	872
	306	507,925	110,893	1,830	1,646	15,238	1,535
Shikata Branch Library	280	55,539	10,865	838	988	3,400	2
	273	47,303	10,621	871	1,281	3,354	5
	261	44,540	10,861	839	1,263	5,011	1
	261	125,833	15,424	1,279	1,172	5,011	7
IPSR Branch Library	240	6,995	231	17	212	290	0
	204	6,644	248	4	248	65	0
	218	7,118	225	10	236	29	0
	238	7,502	184	20	209	387	0
Total		358,348	89,406	2,334	2,573	11,085	1,529
		252,099	70,577	2,651	3,087	8,373	1,153
		180,348	68,849	2,470	3,060	8,257	873
		641,260	126,501	3,129	3,027	20,636	1,542

* The number includes Interlibrary Loan within Okayama University Libraries

Special Collections

The Ikeda Family Collection (Ikedake Bunko)

Central Library houses the Ikeda Family Collection (Ikedake Bunko) which contains records and documents of the Ikeda clan, the fief lord of Okayama.

The collection consists of 68,083 items of administrative and legislative archives, 22,117 volumes of Japanese classics, and 10,420 volumes of Chinese classics.

The collection is well known as the first-rate primary materials for the research of the system of shogunate government and clan governments in the Edo period in Japan.



Shinchō ki (Chronicle of Nobunaga) in 15 volumes
〈Important Cultural Property〉
Keichō 15 (1610)
Call No. 貴-48 (Ki-48)



Gokōen zu (Kōrakuen Garden)
Bunkyū 3 (1863)
Call No. T7-123

Programs Utilizing the Special Collections

1. Exhibition of Ezu from the Ikeda Family Collection, since 1997 (co-sponsored by Okayama City Museum since 2005)
2. Okayama Korakuen Garden Workshop for children, since 2006 (co-sponsored by the Faculty of Education)
3. Open Lectures at Okayama University, since 2008
4. Special Exhibitions on Plants and Agriculture, since 2009 (at the Institute of Plant Science and Resources Branch Library)



Okayama Korakuen Workshop for Children in AY2022



Open Lecture at Okayama University in AY2022

Director

Employees

AY2023-AY2020, from top down

As of May 1 each year

Director of Okayama University Libraries

Kenichiro Koga
(Research Institute for Interdisciplinary Science)
Appointed in April 2021

Deputy Director

Tatsuo Fujii
(Faculty of Natural Science and Technology)
Appointed in April 2021

Masafumi Motomura
(Faculty of Interdisciplinary Science and
Engineering in Health Systems)
Appointed in April 2021

Director of Shikata Branch Library

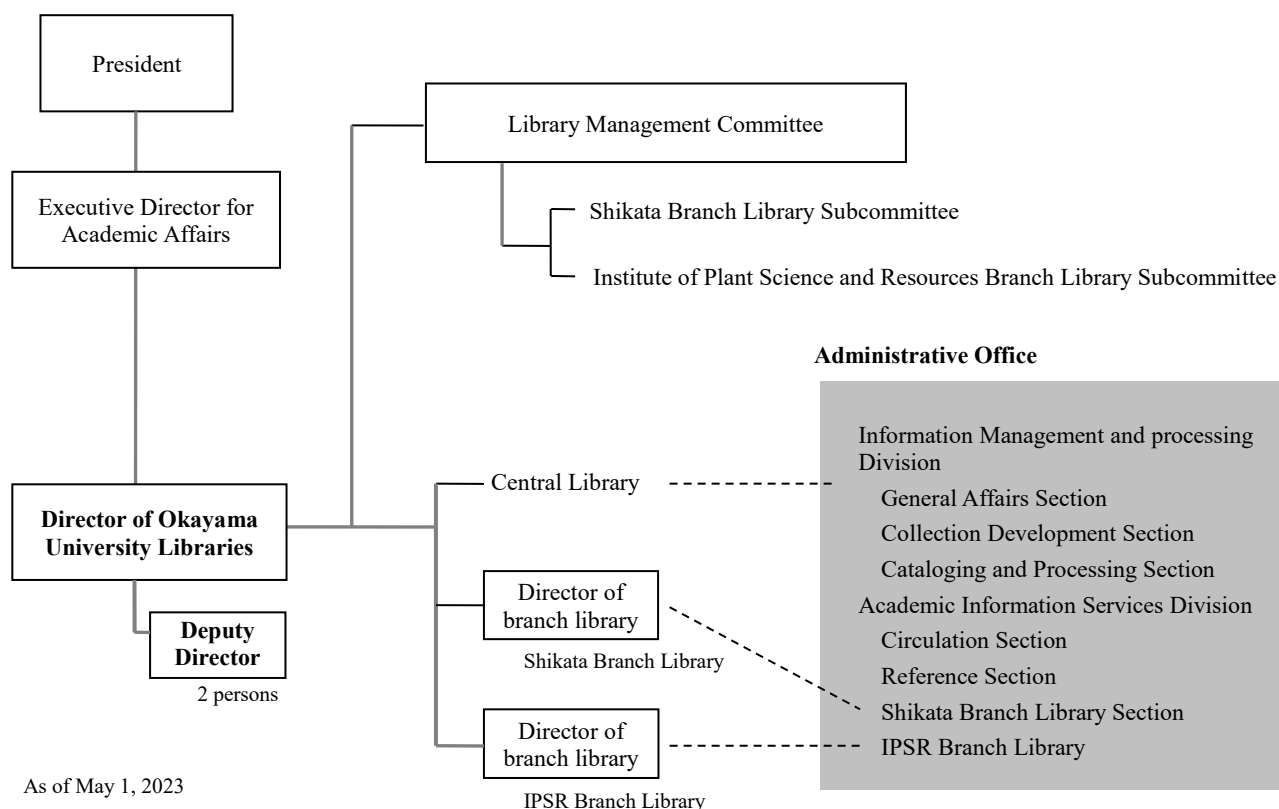
Hitoshi Nagatsuka
(Faculty of Medicine, Dentistry and
Pharmaceutical Sciences)
Appointed in April 2022

Director of IPSR Branch Library

Shin Taketa
(Institute of Plant Science and Resources)
Appointed in April 2023

	Full-time	Part-time	Total
Central Library	20	13	33
	17	13	30
	18	11	29
	18	11	29
Shikata Branch Library	4	4	8
	3	4	7
	3	4	7
	3	4	7
IPSR Branch Library	1	2	3
	1	2	3
	1	2	3
	1	3	4
Total	25	19	44
	21	19	40
	22	17	39
	22	18	40

Organization

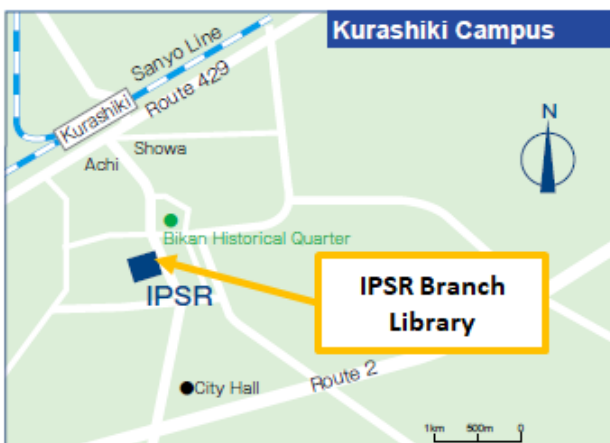
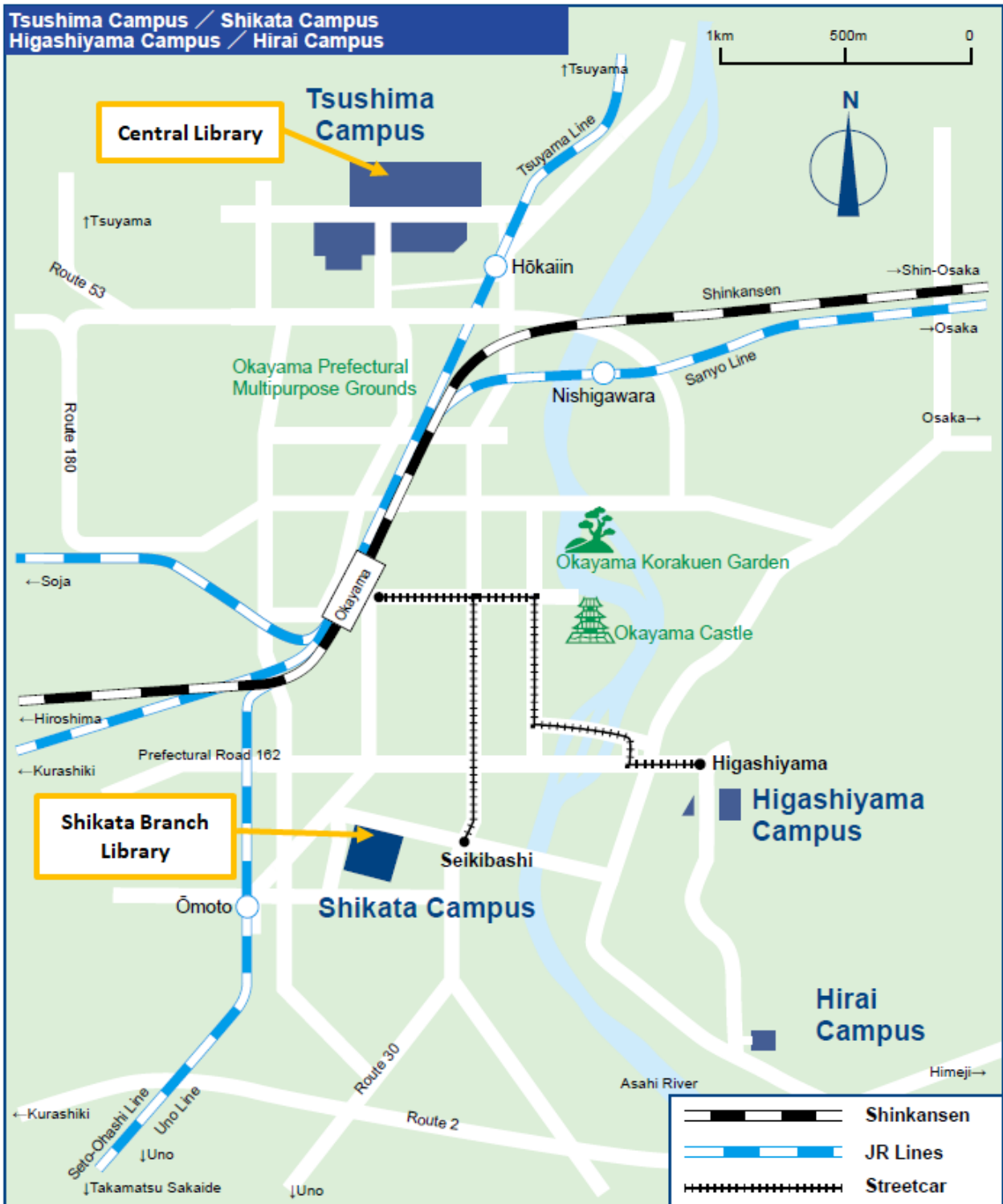


As of May 1, 2023

IPSR Branch Library

Access Map

Tsushima Campus / Shikata Campus
Higashiyama Campus / Hirai Campus





Okayama University Libraries

3-1-1 Tsushima-naka, Kita-ku, Okayama 700-8530

Contact for Inquiries: Okayama University Libraries

Tel. 086-251 -7304

E-mail fae7304@adm.okayama-u.ac.jp

Edited by:

Okayama University Libraries

https://www.lib.okayama-u.ac.jp/index_e.html

Okayama University Libraries

Search 