

# Okayama University Libraries



OKAYAMA  
UNIVERSITY

Open the Door to the World





Central Library



Shikata Branch Library



Institute of Plant Science and Resources  
Branch Library (IPSR Branch Library)

Okayama University Library was established in 1949 just at the same time when the Okayama University. Next year, Library was opened.

Okayama University Libraries consist of three libraries: Central Library on Tsushima Campus, Shikata Branch Library on Shikata Campus, and Institute of Plant Science and Resources Branch Library on Kurashiki Campus. The libraries provide a wide range of services to the local communities, and educational and research institutions, not only to member at Okayama University. Some library materials are available for reading to people in the community to support their lifelong learning activities. We also hold regular exhibitions, mainly records and documents of the Ikeda clan, the fief lord of Okayama.

To promote and strengthen the web-based e-library services, we have been working on digitizing internal publications and the many Ezu (pictorial map) in the special collections. And we provide access to approximately 85,000 e-journals, 31 databases, and publishes the academic research achievements of the University's members (Scientific Achievement Repository).

#### Okayama University Libraries

**Central Library** 3-1-1 Tsushima-naka, Kita-ku, Okayama City, Okayama 700-8530

**Shikata Branch Library** 2-5-1 Shikata-cho, Kita-ku, Okayama City, Okayama 700-8558

**Institute of Plant Science and Resources Branch Library** 2-20-1 Chuo, Kurashiki City, Okayama 710-0046

## Facilities, Library Hours, and Borrowing Limits

As of May 1, 2022

	Shelf Capacity	Number of Seats	Library Hours (during school terms)			Borrowing Limit (books)	
			Weekdays	Saturday	Sunday and holidays	Undergraduate and graduate students	Faculty and staff
<b>Central Library</b>	(books, in tens of thousands) 113.0	(seats) 511	8:00-23:00	10:00-18:00		10 books, 14 days 15 books, 14 days	30 books, 14 days
<b>Shikata Branch Library</b>	20.8	377	9:00-21:00	10:00-17:00	Closed	5 books, 14 days	5 books, 14 days
<b>IPSR Branch Library</b>	15.0	36	9:00-17:00	Closed		5 books, 14 days	No limit, 14 days
<b>Total</b>	<b>148.8</b>	<b>924</b>					

Shikata Branch Library is open 24 hours a day for students and teachers at Shikata campus (no staff on duty) after closing time.

IPSR Branch Library is open 24 hours a day only for IPSR members.

## Library Holdings

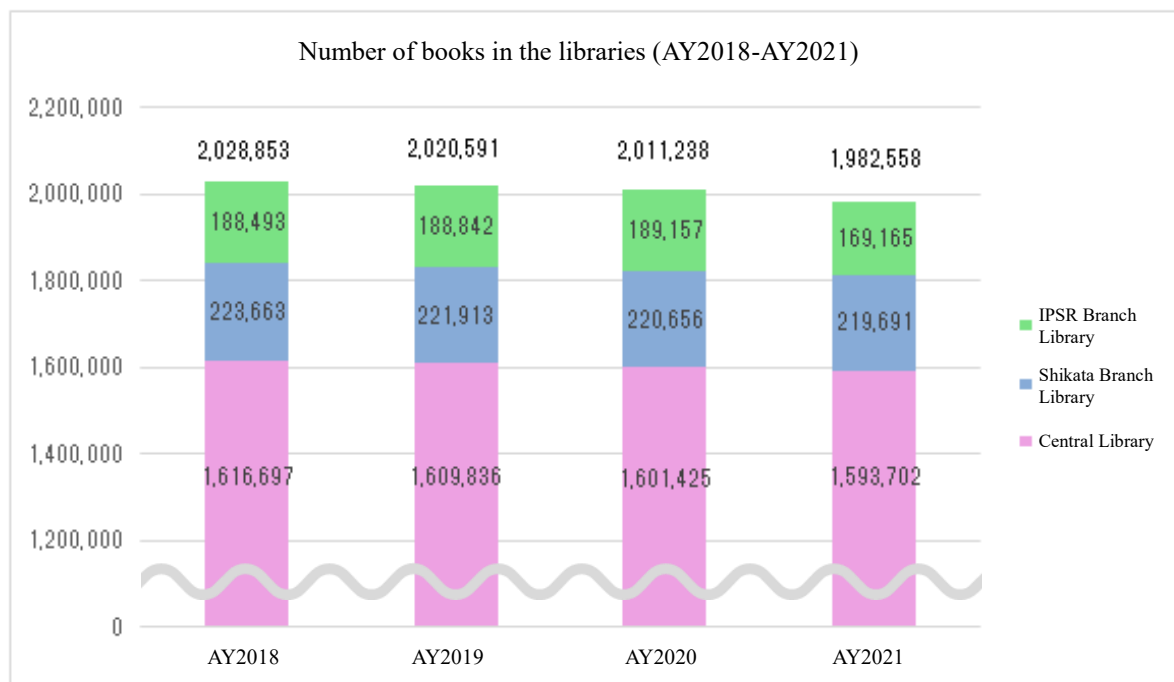
AY2021-AY2018, from the top down  
(E-journals are from AY2022 to AY2019)

	Books			Journals (titles)			E-journals*
	Japanese and Chinese books	Foreign books	Total	Japanese and Chinese journals	Foreign journals	Total	
<b>Central Library</b>	<b>1,127,233</b>	<b>466,469</b>	<b>1,593,702</b>	<b>21,597</b>	<b>10,056</b>	<b>31,653</b>	-
	1,135,453	465,972	1,601,425	21,533	10,078	31,611	-
	1,143,607	466,229	1,609,836	21,040	9,973	31,013	-
	1,147,047	469,650	1,616,697	20,784	9,883	30,667	-
<b>Shikata Branch Library</b>	<b>115,912</b>	<b>103,779</b>	<b>219,691</b>	<b>4,081</b>	<b>3,193</b>	<b>7,274</b>	-
	115,566	105,090	220,656	3,967	3,238	7,205	-
	115,904	106,009	221,913	3,760	3,134	6,894	-
	117,661	106,002	223,663	3,710	3,104	6,814	-
<b>IPSR Branch Library</b>	<b>77,496</b>	<b>91,669</b>	<b>169,165</b>	<b>9,076</b>	<b>4,762</b>	<b>13,838</b>	-
	96,564	92,593	189,157	9,054	4,712	13,766	-
	96,344	92,498	188,842	8,965	4,692	13,657	-
	96,086	92,407	188,493	8,679	4,691	13,370	-
<b>Total</b>	<b>1,320,641</b>	<b>661,917</b>	<b>1,982,558</b>	<b>34,754</b>	<b>18,011</b>	<b>52,765</b>	<b>85,938</b>
	1,347,583	663,655	2,011,238	34,554	18,028	52,582	84,234
	1,355,855	664,736	2,020,591	33,765	17,799	51,564	79,813
	1,360,794	668,059	2,028,853	33,173	17,678	50,851	73,333

\*The number of e-journals is the number of titles registered in Link Resolver.

## Number of Books in the Libraries

\*Including those kept in laboratories



## Service

AY2021-AY2018, from the top down

	Number of Open Days	Number of Visitors	Lending to individuals	Interlibrary Loan*		Reference service	Usage of Special Collections (No. of items)
				Requests	Request received		
Central Library	276	198,152	59,708	1,776	1,558	4,954	1,148
	248	128,690	57,763	1,621	1,561	3,217	872
	306	507,925	110,893	1,830	1,646	15,238	1,535
	305	556,482	113,643	1,985	1,334	16,694	1,619
Shikata Branch Library	273	47,303	10,621	871	1,281	3,354	5
	261	44,540	10,861	839	1,263	5,011	1
	261	125,833	15,424	1,279	1,172	5,011	7
	280	139,335	16,186	1,261	1,241	5,283	32
IPSR Branch Library	204	6,644	248	4	248	65	0
	218	7,118	225	10	236	29	0
	238	7,502	184	20	209	387	0
	242	9,621	206	18	248	381	1
Total		252,099	70,577	2,651	3,087	8,373	1,153
		180,348	68,849	2,470	3,060	8,257	873
		641,260	126,501	3,129	3,027	20,636	1,542
		705,438	130,035	3,264	2,823	22,358	1,652

\* The number includes Interlibrary Loan within Okayama University Libraries



## Special Collections

### The Ikeda Family Collection (Ikedake Bunko)

Central Library houses the Ikeda Family Collection (Ikedake Bunko) which contains records and documents of the Ikeda clan, the fief lord of Okayama.

The collection consists of 68,083 items of administrative and legislative archives, 22,117 volumes of Japanese classics, and 10,420 volumes of Chinese classics.

The collection is well known as the first-rate primary materials for the research of the system of shogunate government and clan governments in the Edo period in Japan.



Shinchō ki (Chronicle of Nobunaga) in 15 volumes  
(Important Cultural Property)  
Keichō 15 (1610)  
Call No. 貴-48 (Ki-48)



Gokōen zu (Kōrakuen Garden)  
Bunkyū 3 (1863)  
Call No. T7-123

## Programs Utilizing the Special Collections

1. Exhibition of Ezu from the Ikeda Family Collection, since 1997 (co-sponsored by Okayama City Museum since 2005)
2. Okayama Korakuen Garden Workshop for children, since 2006 (co-sponsored by the Faculty of Education)
3. Open Lectures at Okayama University, since 2008
4. Special Exhibitions on Plants and Agriculture, since 2009 (at the Institute of Plant Science and Resources Branch Library)



Okayama Korakuen Workshop for Children in AY2019



Open Lecture at Okayama University in AY2021

## Director

## Employees

AY2022-AY2019, from top down

As of May 1 each year

### Director of Okayama University Libraries

Kenichiro Koga  
(Research Institute for Interdisciplinary Science)  
Appointed in April 2021

### Deputy Director

Tatsuo Fujii  
(Faculty of Natural Science and Technology)  
Appointed in April 2021

Masafumi Motomura  
(Faculty of Interdisciplinary Science and  
Engineering in Health Systems)  
Appointed in April 2021

### Director of Shikata Branch Library

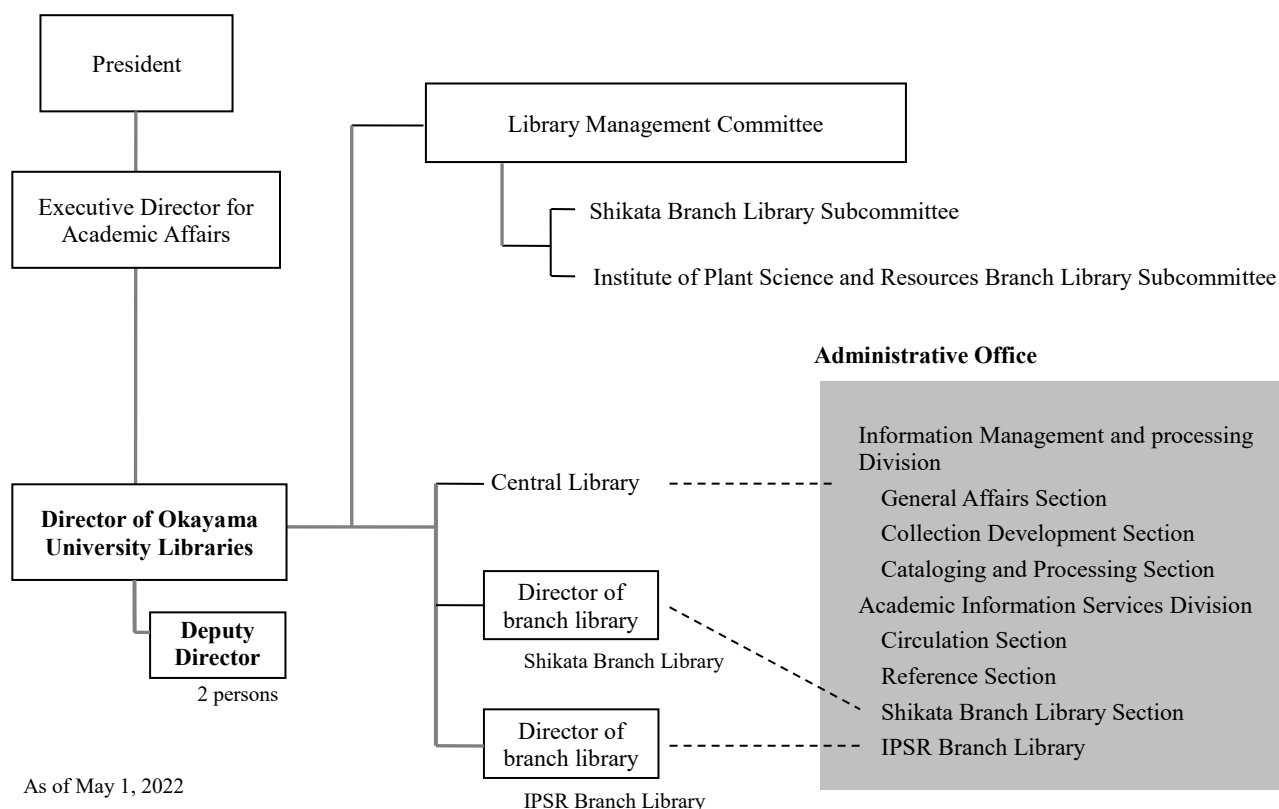
Hitoshi Nagatsuka  
(Faculty of Medicine, Dentistry and  
Pharmaceutical Sciences)  
Appointed in April 2022

### Director of IPSR Branch Library

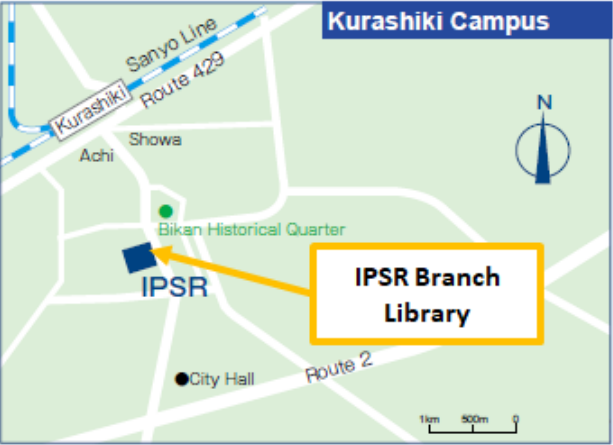
Galis Ivan  
(Institute of Plant Science and Resources)  
Appointed in April 2020

	Full-time	Part-time	Total
<b>Central Library</b>	17	13	30
	18	11	29
	18	11	29
	18	10	28
<b>Shikata Branch Library</b>	3	4	7
	3	4	7
	3	4	7
	3	4	7
<b>IPSR Branch Library</b>	1	2	3
	1	2	3
	1	3	4
	1	3	4
<b>Total</b>	21	19	40
	22	17	39
	22	18	40
	22	17	39

## Organization



# Access Map





## Okayama University Libraries

3-1-1 Tsushima-naka, Kita-ku, Okayama 700-8530

Contact for Inquiries: Okayama University Libraries

Tel. 086-251-7304

E-mail [fae7304@adm.okayama-u.ac.jp](mailto:fae7304@adm.okayama-u.ac.jp)

Edited by:

Okayama University Libraries

[https://www.lib.okayama-u.ac.jp/index\\_e.html](https://www.lib.okayama-u.ac.jp/index_e.html)

Okayama University Libraries

Search 